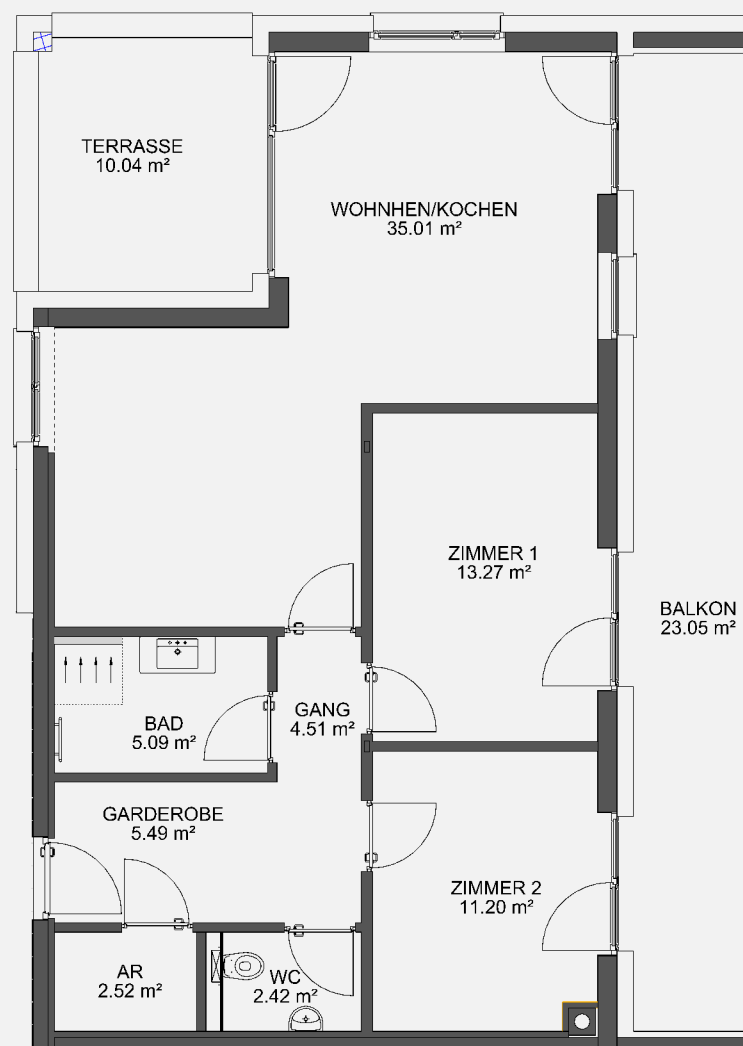
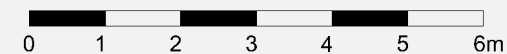




WOHNBEISPIEL
M 1/100



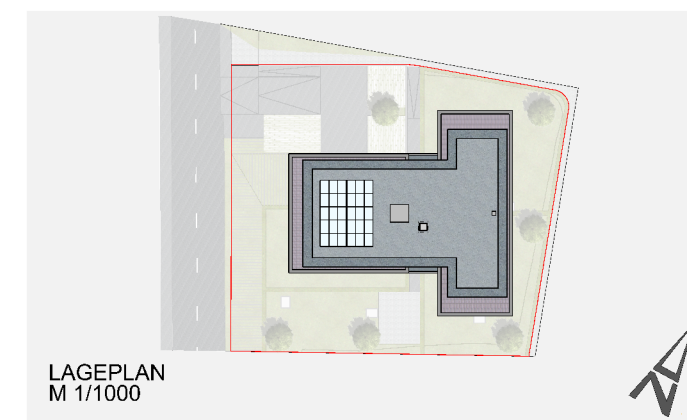
GRUNDRISS
M 1/100



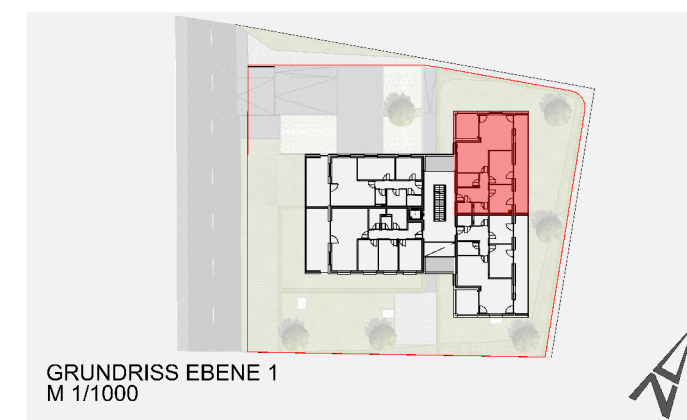
3 Zimmerwohnung EBENE 1

TOP 101

| | | |
|---------------------|------------|----------------------------|
| WOHNEN/ESSEN/KOCHEN | ca. | 35.01 m ² |
| ZIMMER 1 | ca. | 13.27 m ² |
| ZIMMER 2 | ca. | 11.20 m ² |
| BAD | ca. | 5.09 m ² |
| WC | ca. | 2.42 m ² |
| GANG | ca. | 4.51 m ² |
| GARDEROBE | ca. | 5.49 m ² |
| AR | ca. | 2.52 m ² |
| Wohnfläche | ca. | 79.52 m² |
| TERRASSE | ca. | 10.04 m ² |
| BALKON | ca. | 23.05 m ² |
| KELLER | ca. | 5.25 m ² |



LAGEPLAN
M 1/1000



GRUNDRISS EBENE 1
M 1/1000



ANSICHT NORD-WEST
M 1/1000