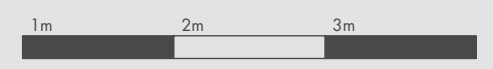
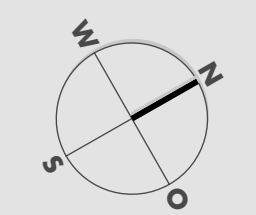
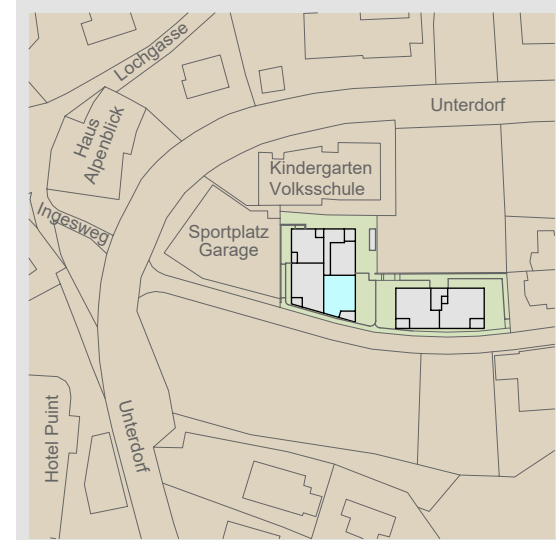
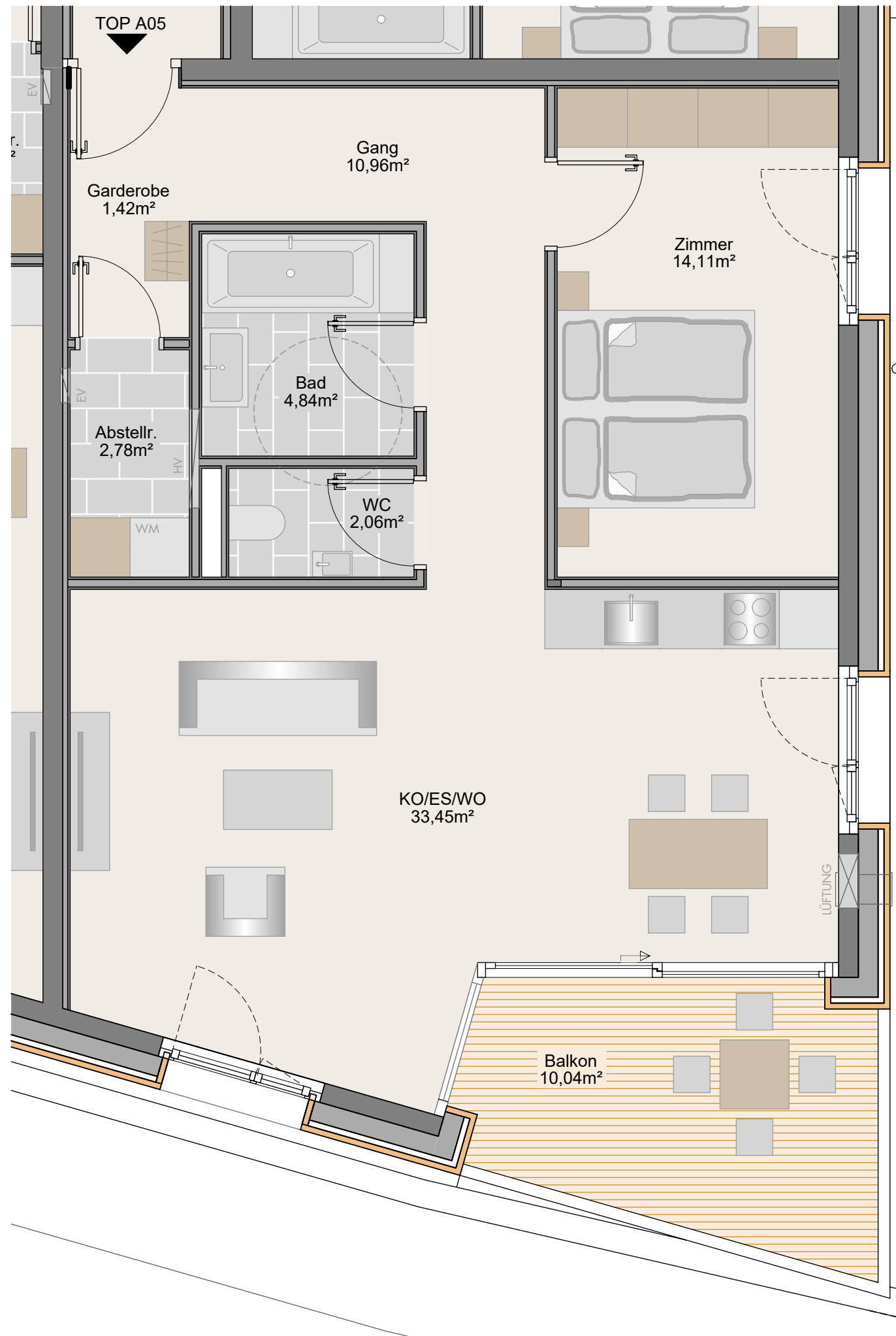


Unterdorf Ladis

TOP A05
 2-Zimmer-Wohnung
 2.Obergeschoss 69.62m²

Kochen/Essen/Wohnen	33.45 m ²
Zimmer	14.11 m ²
WC	2.06 m ²
Bad	4.84 m ²
Gang	10.96 m ²
Garderobe	1.42 m ²
Abstellraum	2.78 m ²
<hr/>	
Wohnnutzfläche	69.62 m ²
Balkon	10.04 m ²
Kellerabteil	4.43 m ²



Maßstab 1:50 (1cm = 50cm)

