

# Unterdorf Ladis

## TOP B02 3-Zimmer-Wohnung Erdgeschoss 82.84m<sup>2</sup>

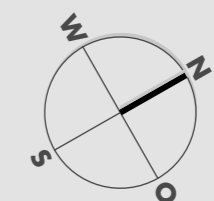
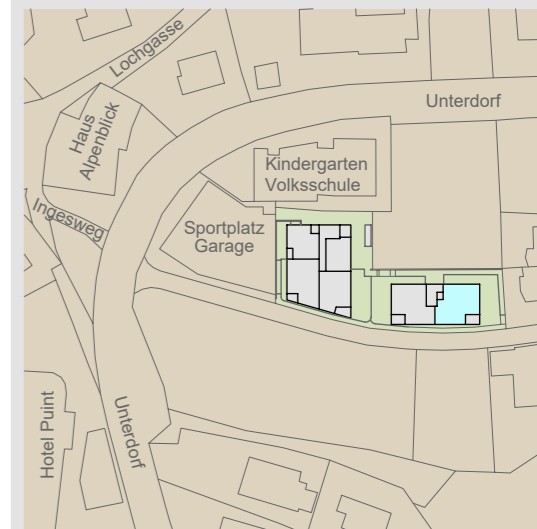
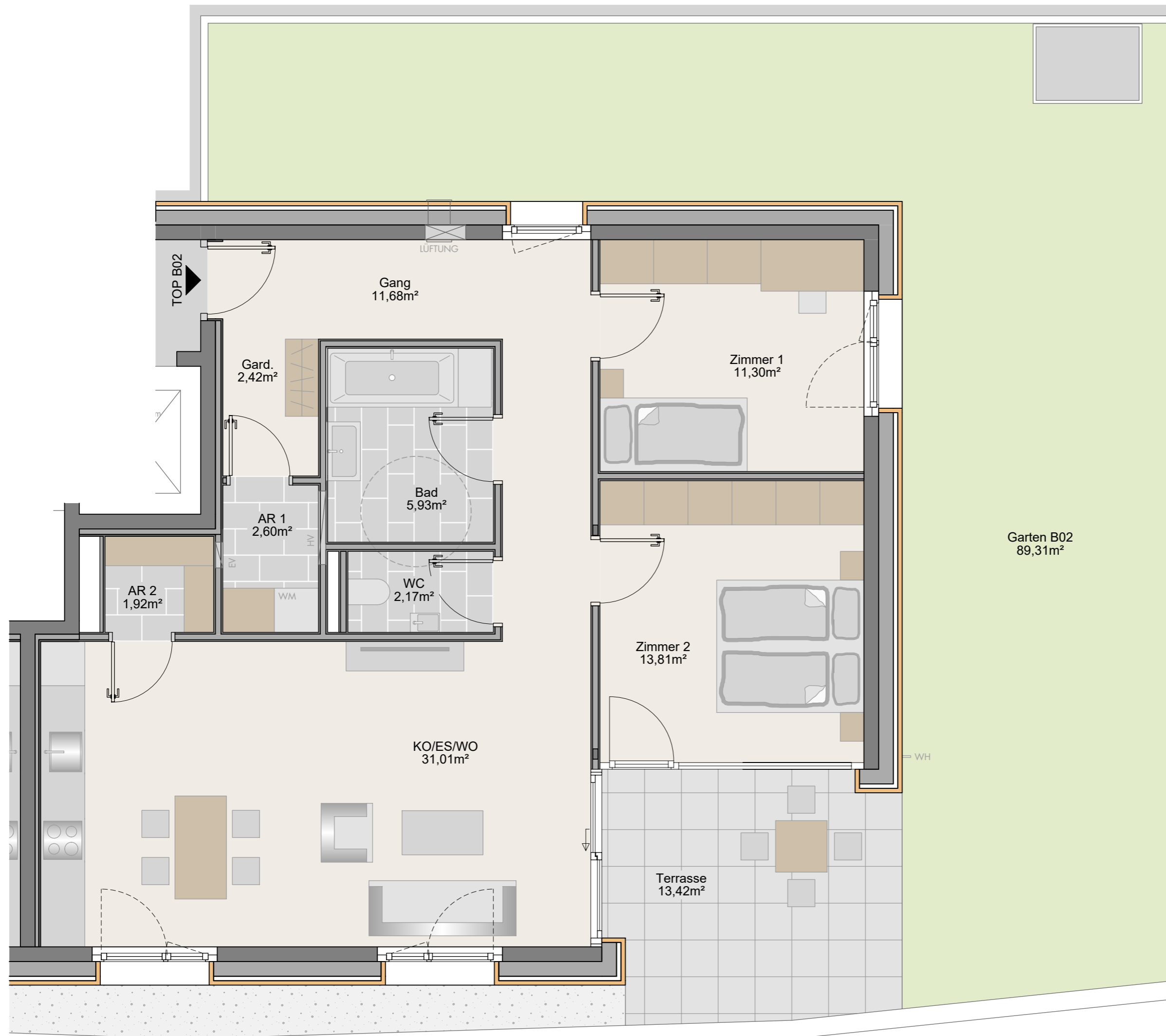
Kochen/Essen/Wohnen	31.01 m <sup>2</sup>
Abstellraum 2	1.92 m <sup>2</sup>
Zimmer 1	11.30 m <sup>2</sup>
Zimmer 2	13.81 m <sup>2</sup>
WC	2.17 m <sup>2</sup>
Bad	5.93 m <sup>2</sup>
Gang	11.68 m <sup>2</sup>
Garderobe	2.42 m <sup>2</sup>
Abstellraum 1	2.60 m <sup>2</sup>

Wohnnutzfläche 82.84 m<sup>2</sup>

Terrasse 13.42 m<sup>2</sup>

Kellerabteil 10.21 m<sup>2</sup>

Garten 89.31 m<sup>2</sup>



Maßstab 1:50 (1cm = 50cm)

22.02.2023

