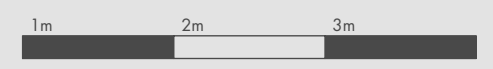
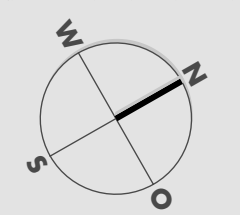
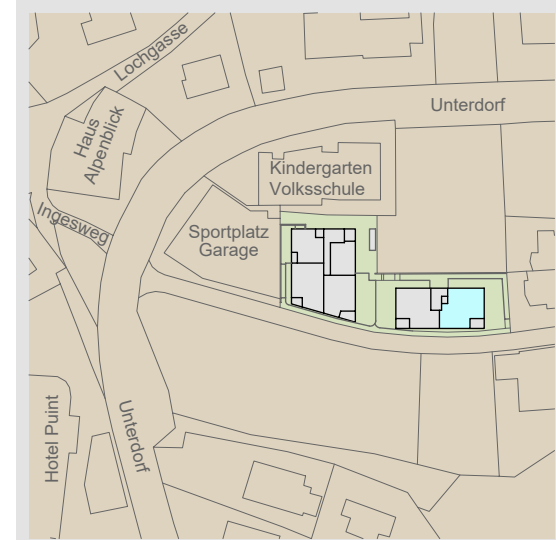
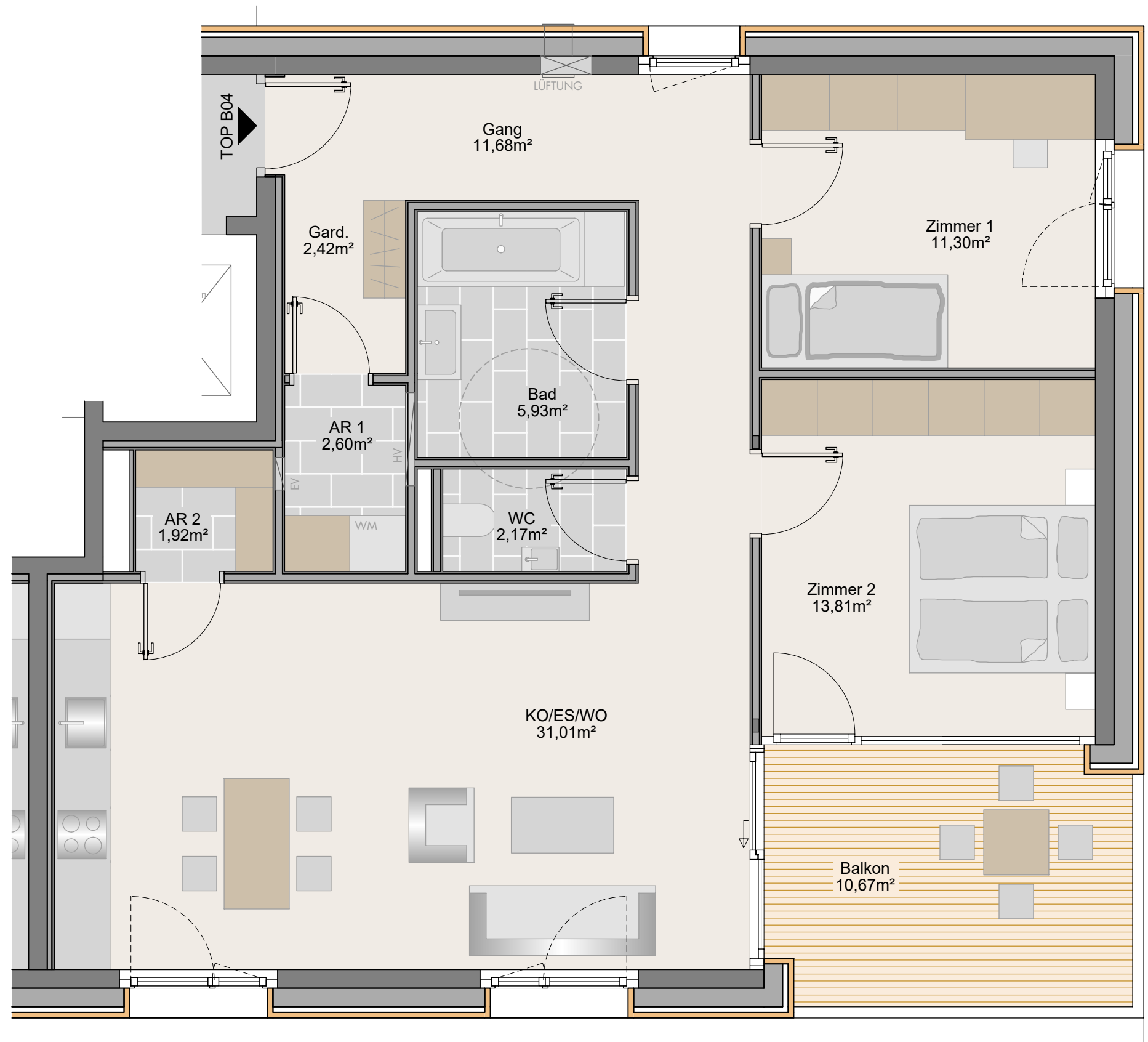


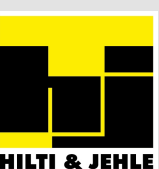
# Unterdorf Ladis

TOP B04  
 3-Zimmer-Wohnung  
 1.Obergeschoss 82.84m<sup>2</sup>

Kochen/Essen/Wohnen	31.01 m <sup>2</sup>
Abstellraum 2	1.92 m <sup>2</sup>
Zimmer 1	11.30 m <sup>2</sup>
Zimmer 2	13.81 m <sup>2</sup>
WC	2.17 m <sup>2</sup>
Bad	5.93 m <sup>2</sup>
Gang	11.68 m <sup>2</sup>
Garderobe	2.42 m <sup>2</sup>
Abstellraum 1	2.60 m <sup>2</sup>
<hr/>	
Wohnnutzfläche	82.84 m <sup>2</sup>
Balkon	10.67 m <sup>2</sup>
Kellerabteil	16.50 m <sup>2</sup>



Maßstab 1:50 (1cm = 50cm)



22.02.2023

H/B = 297 / 420 (0.12m<sup>2</sup>)